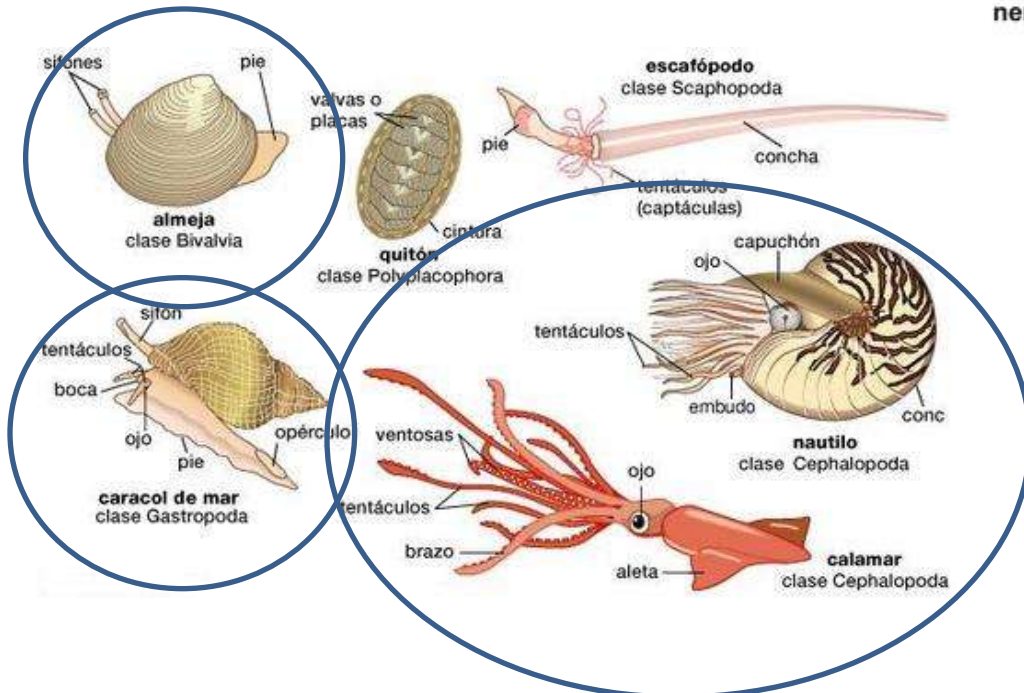
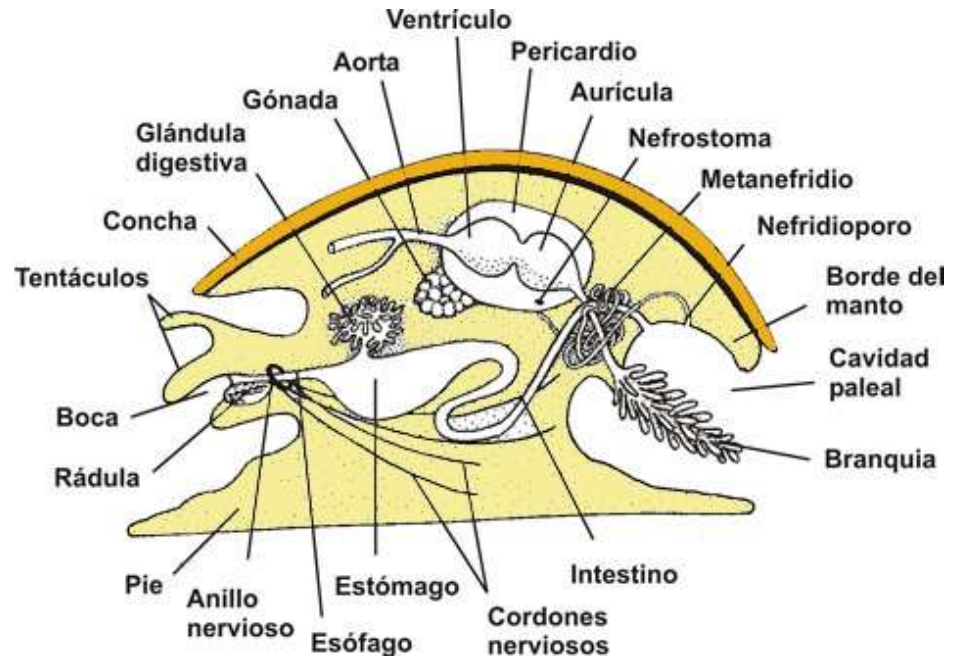




# MOLUSCOS

# MOLUSCOS

- Son animales triblásticos protóstomos
- Celomados
- Simetría bilateral
- No segmentados
- Parte ventral transformada en un **pie** musculado
- Parte dorsal recubierta por el **manto**, que segrega la concha (falta en algunos)



Principales grupos:

- GASTEROPODOS
- BIVALVOS
- CEFALÓPODOS

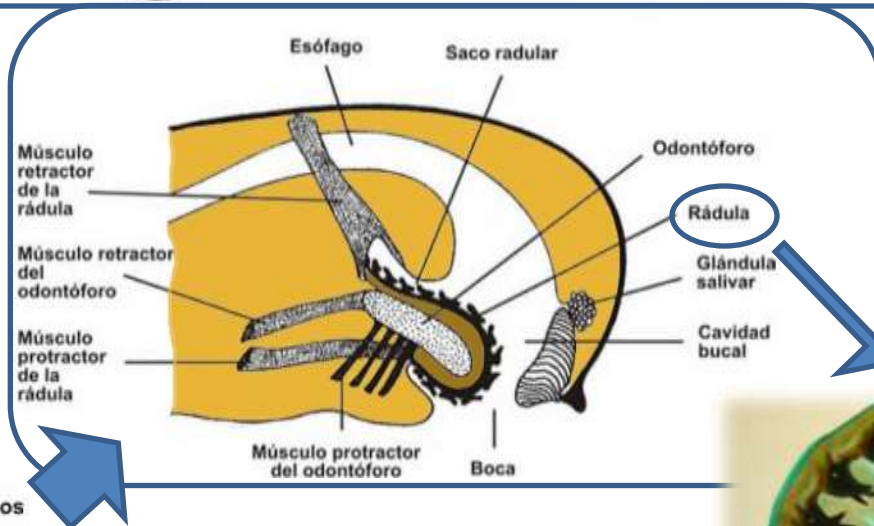
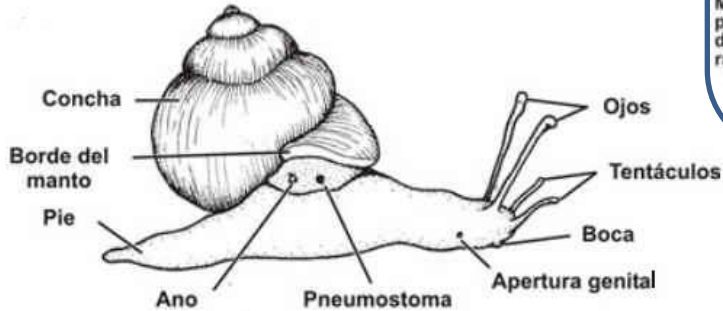
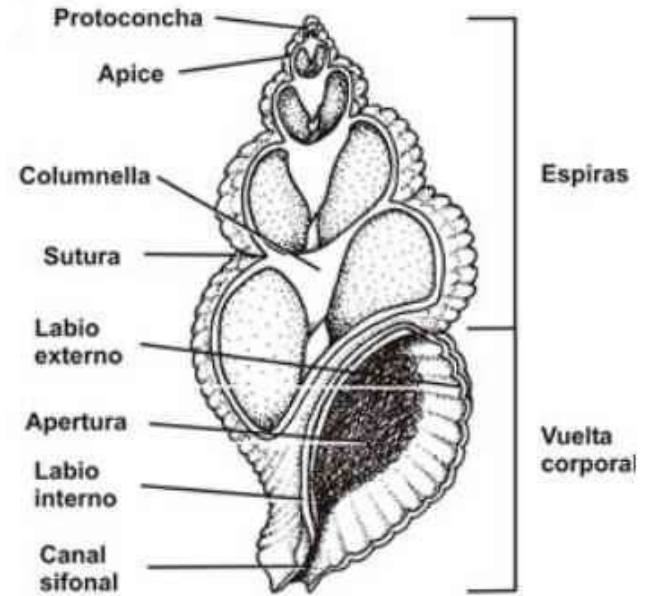
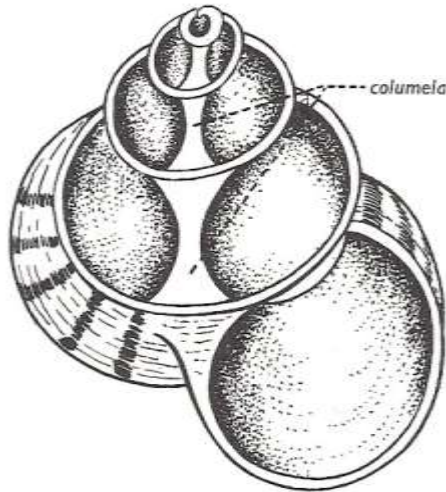
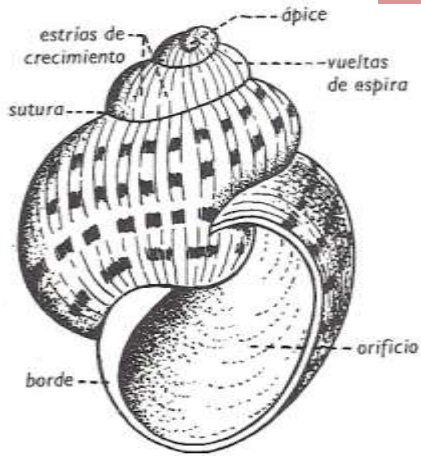
Otros:

- Escafópodos
- Monoplacóforos
- Poliplacóforos



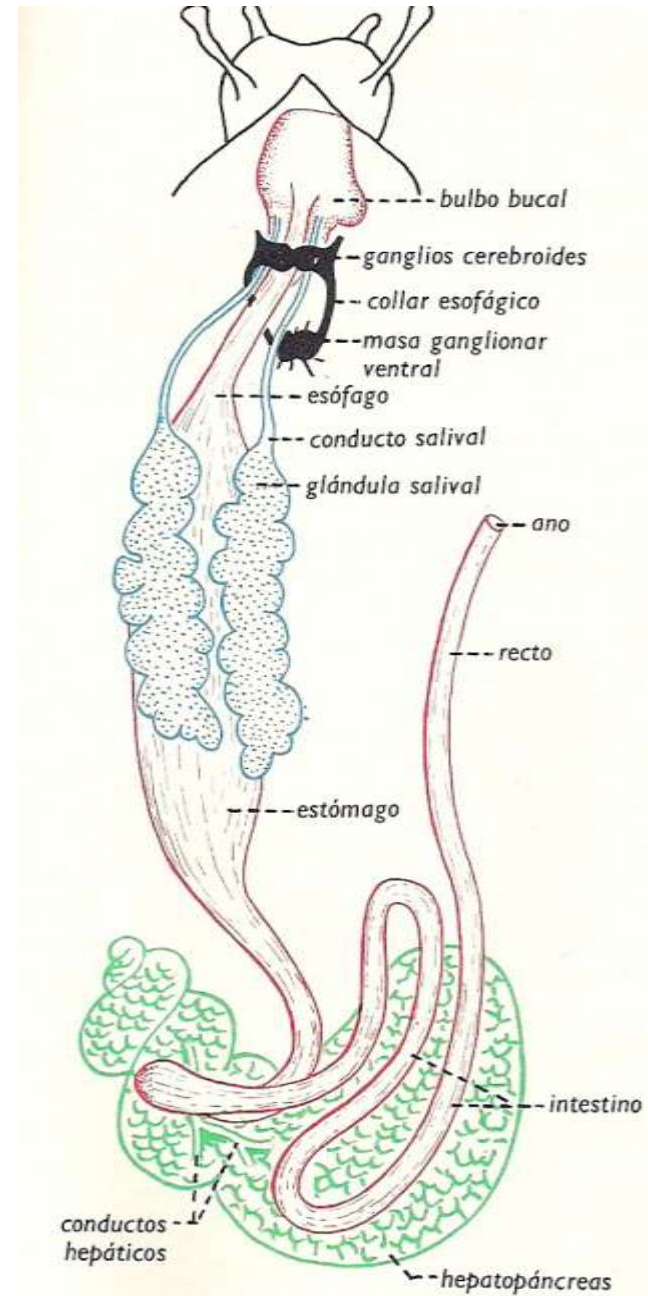
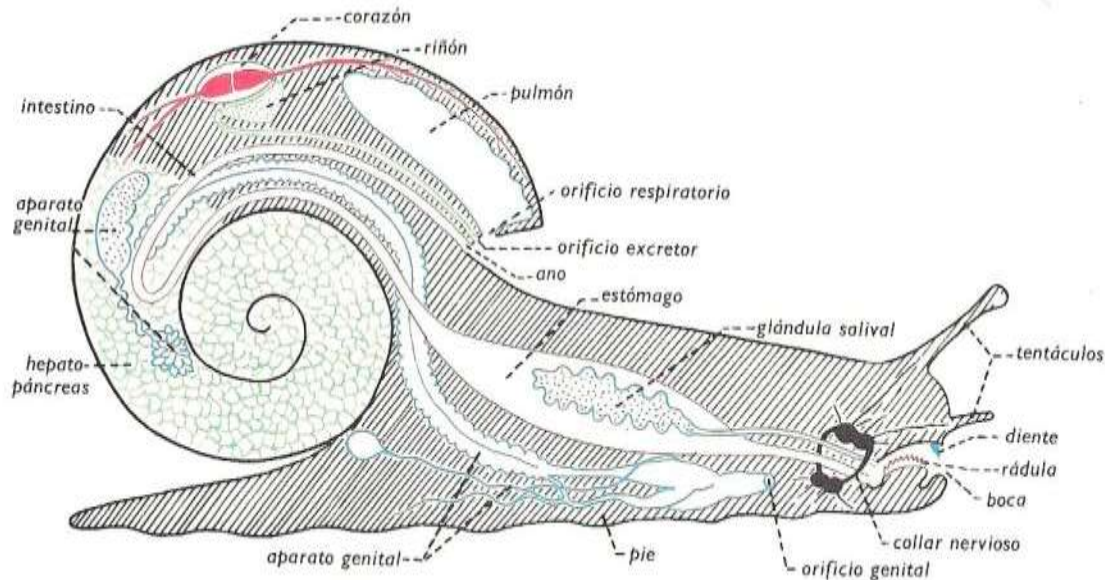
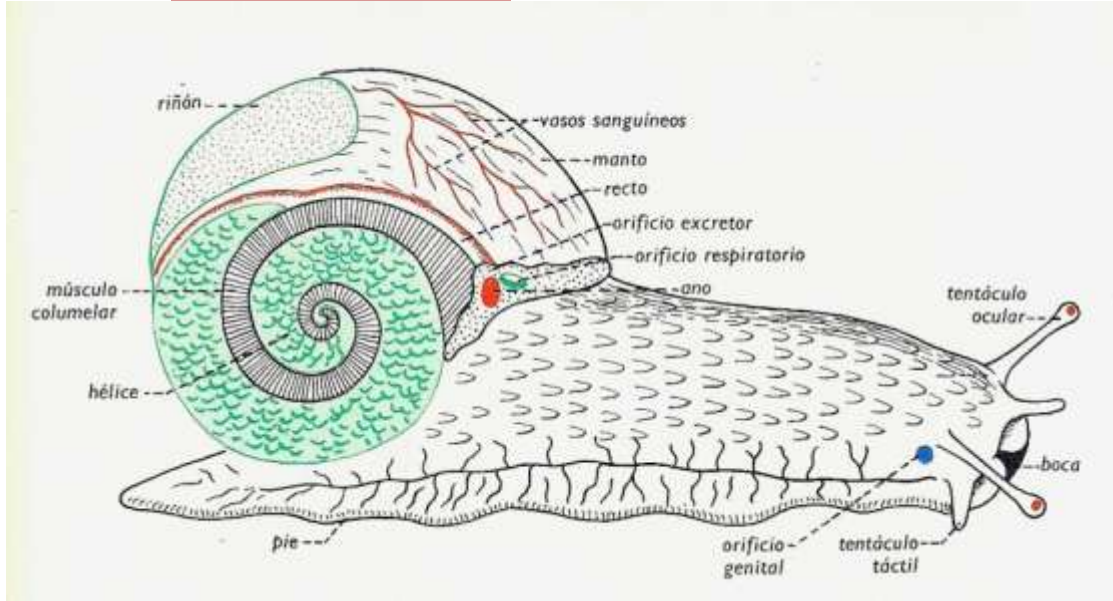
# MOLUSCOS

## GASTERÓPODOS



# MOLUSCOS

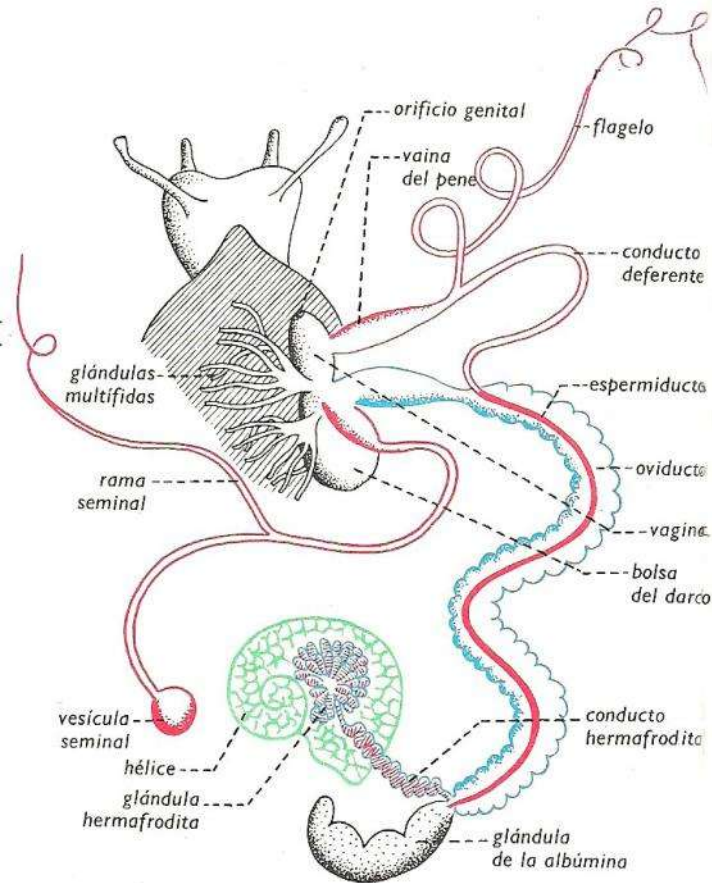
# GASTERÓPODOS



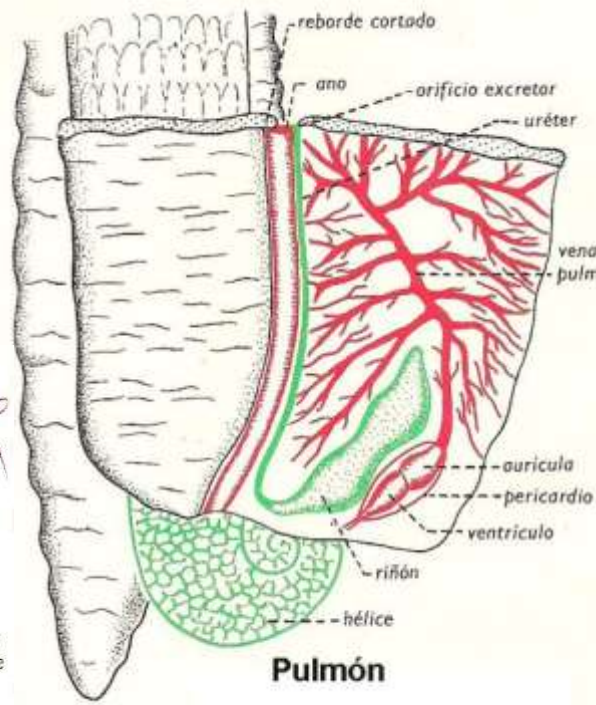


# MOLUSCOS

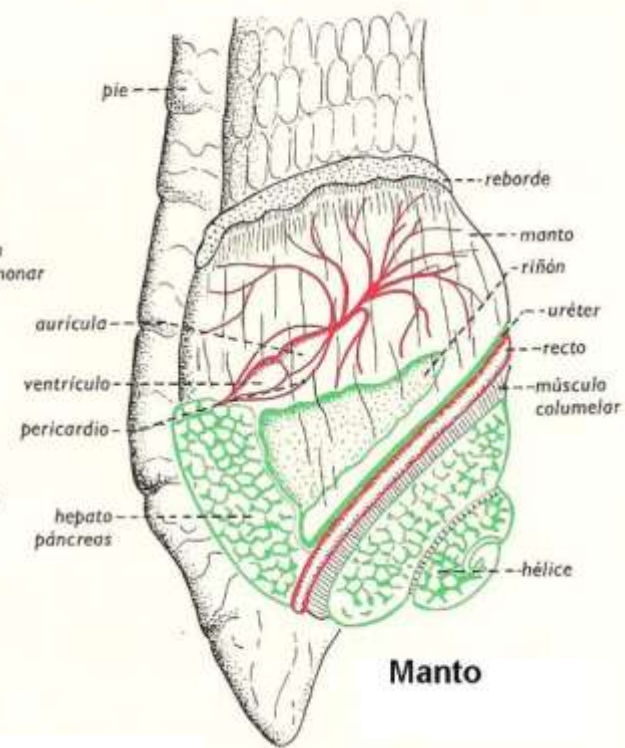
## GASTERÓPODOS (caracol)



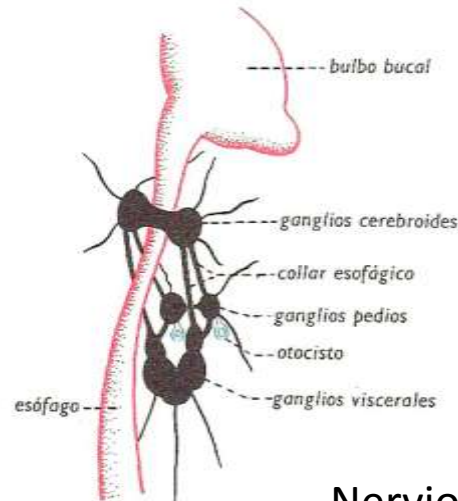
Reproductor



Pulmón



Manto



Nervioso (anterior)

# MOLUSCOS

# GASTERÓPODOS

Prosobranquios: caracoles marinos, lapas, orejas de mar, bígamos,...



Opisthobranquios: casi todos marinos: babosas marinas, mariposas marinas...



Pulmonados: caracoles terrestres, de agua dulce y babosas.

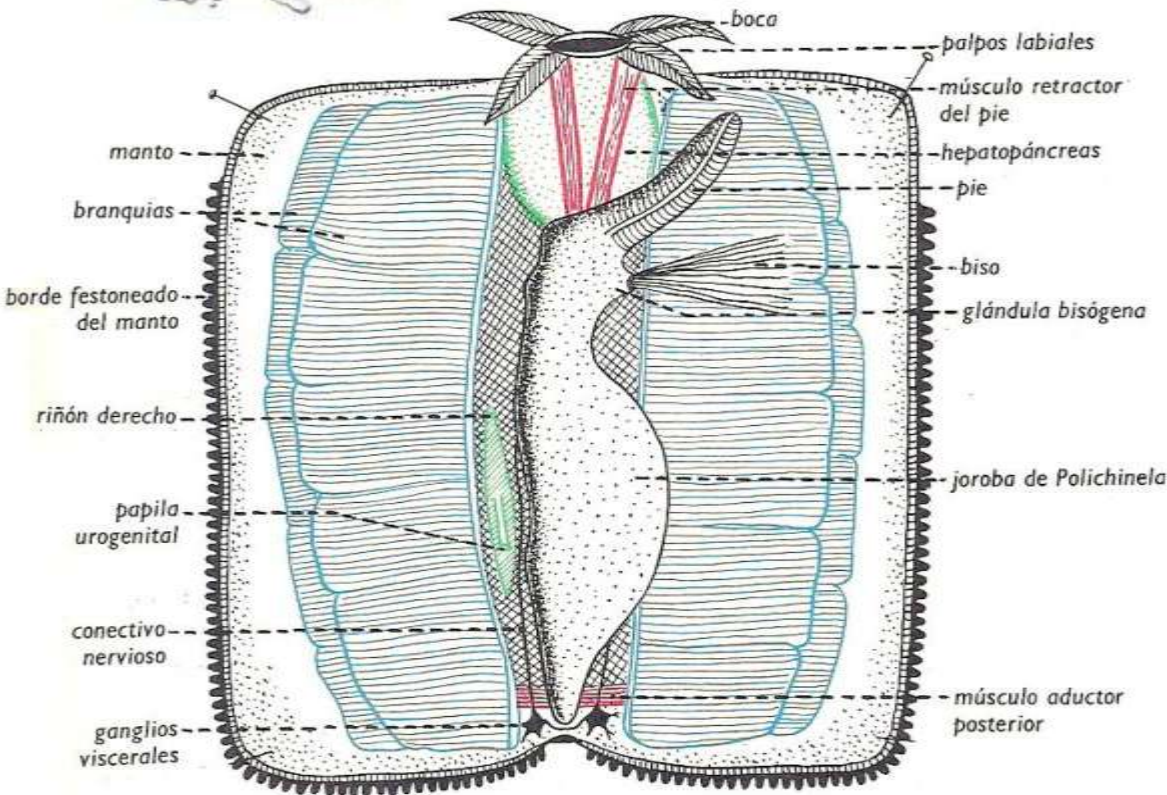
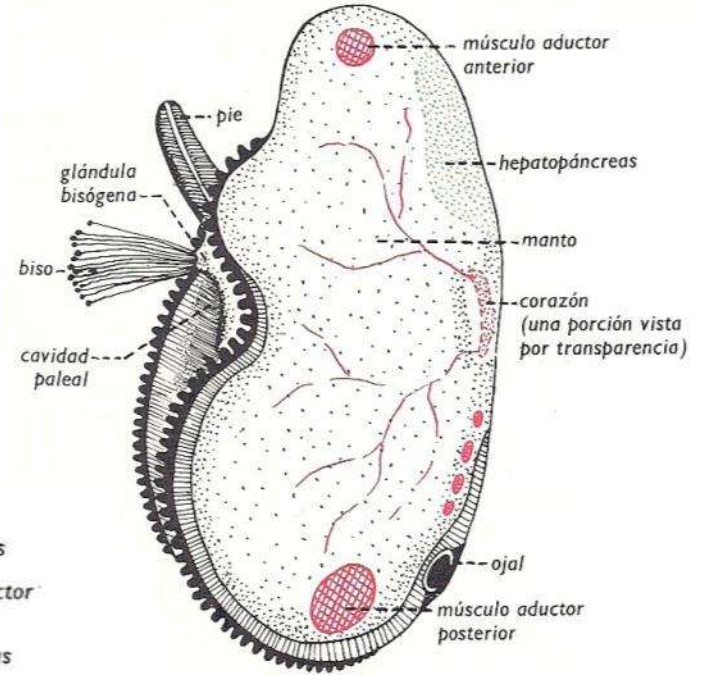




# MOLUSCOS

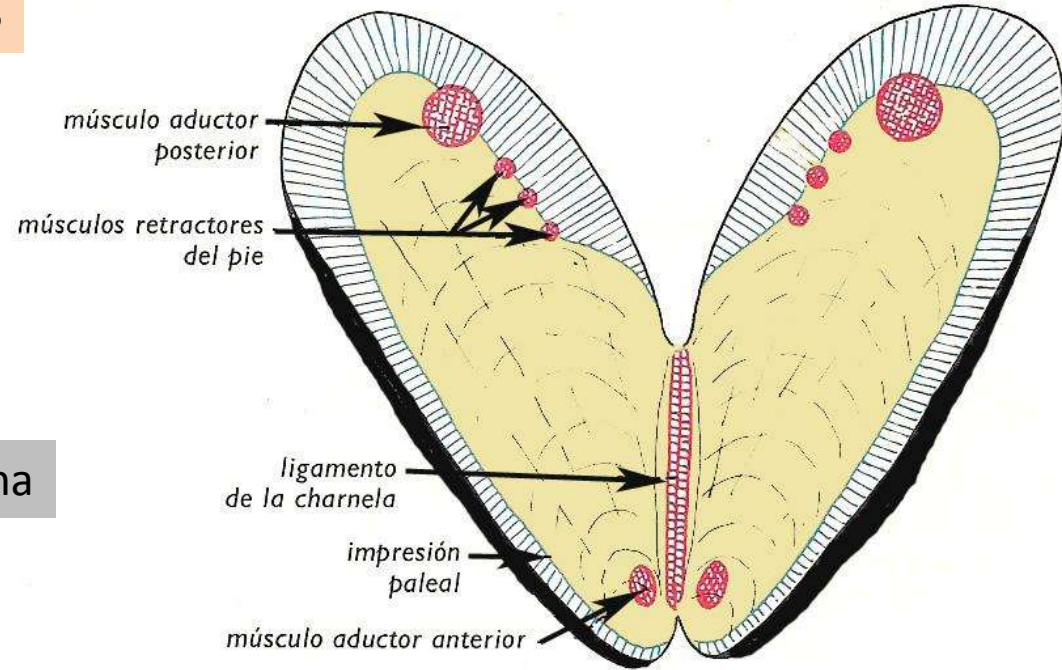
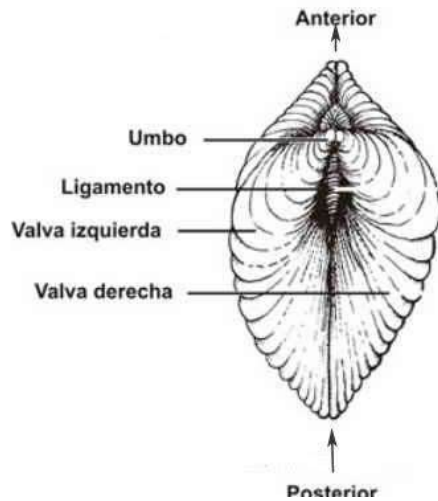
## BIVALVOS

(Mejillón)

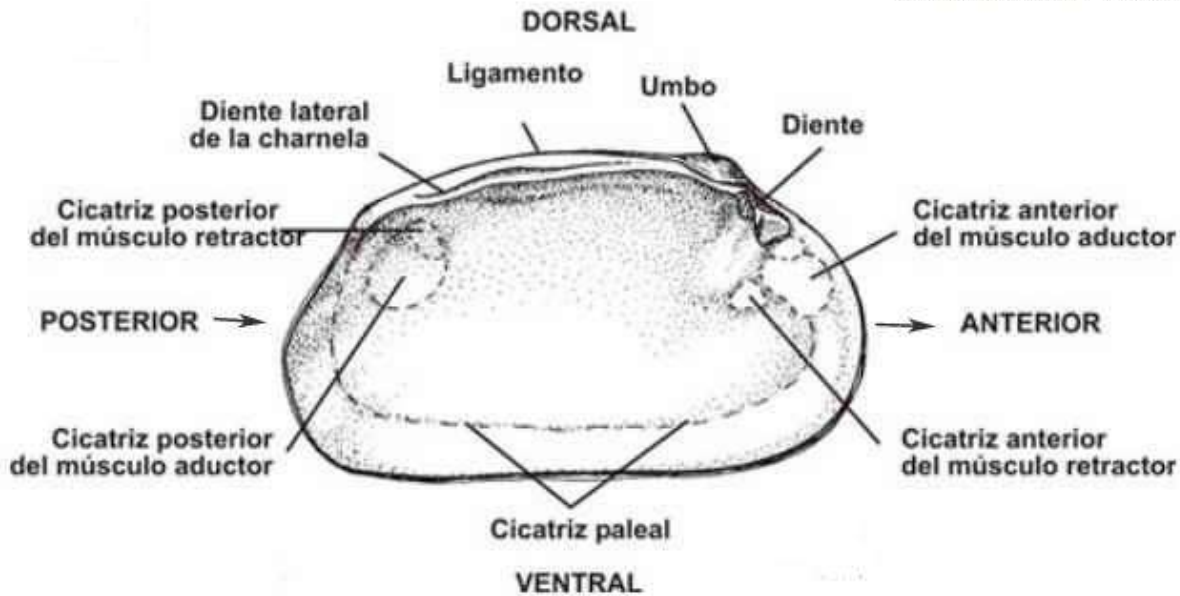


# MOLUSCOS

## BIVALVOS



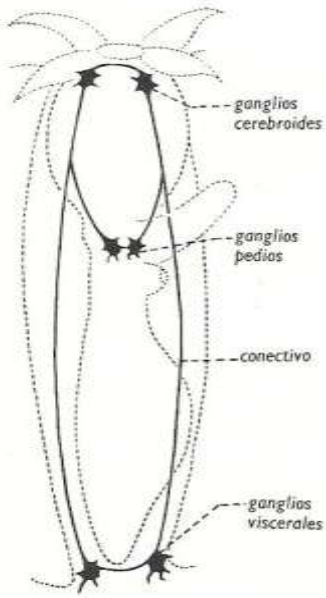
## Concha



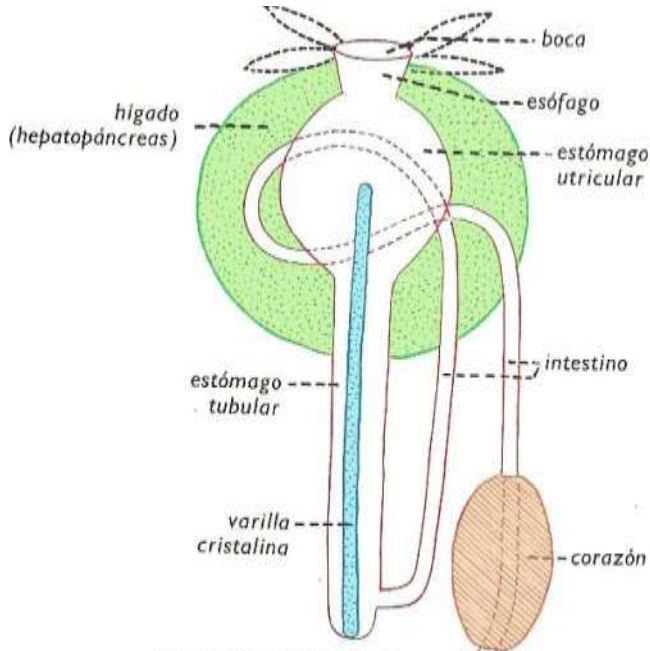


# MOLUSCOS

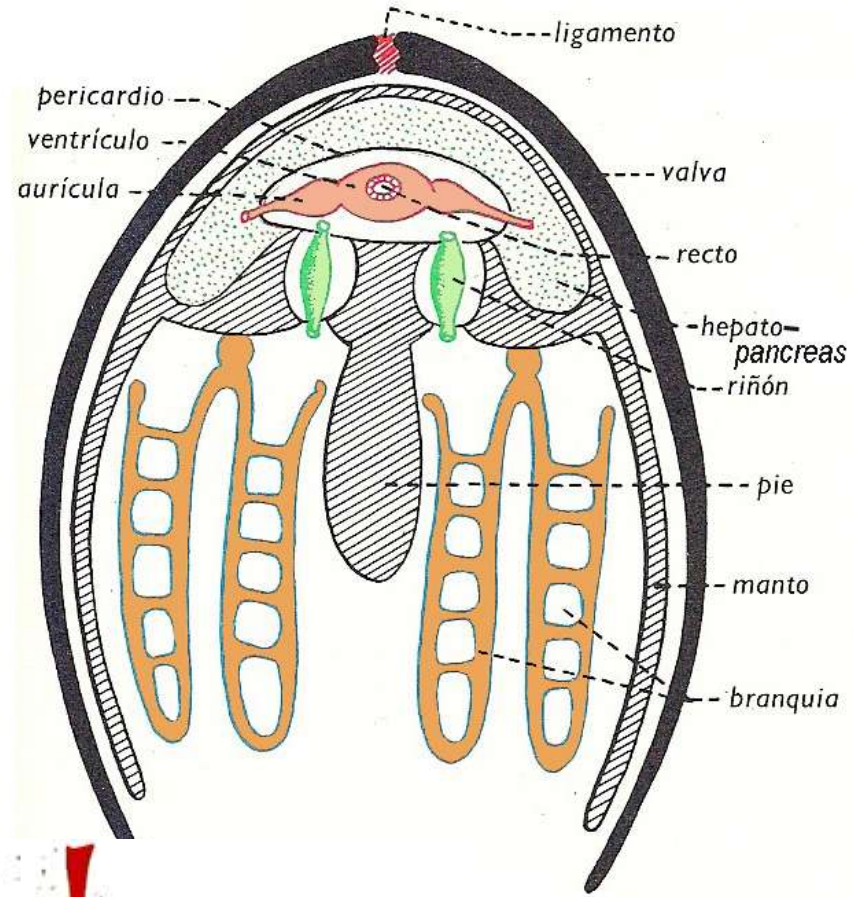
## BIVALVOS



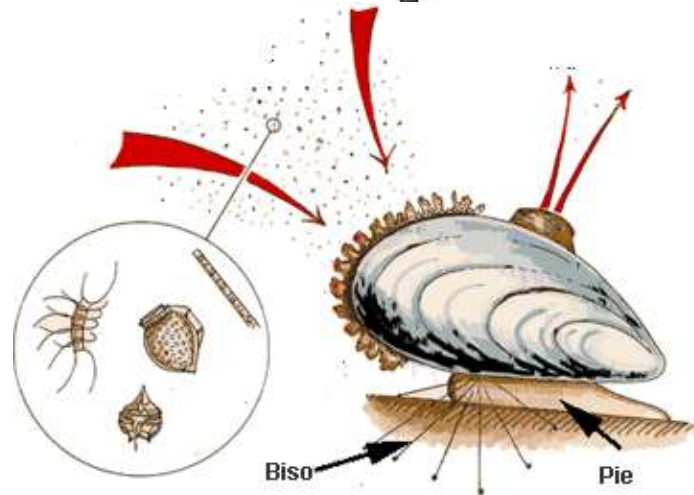
Sistema nervioso



Aparato digestivo



(mejillón)



# MOLUSCOS

## BIVALVOS

Tridacna



Chlamys



Ostraea

Tapes

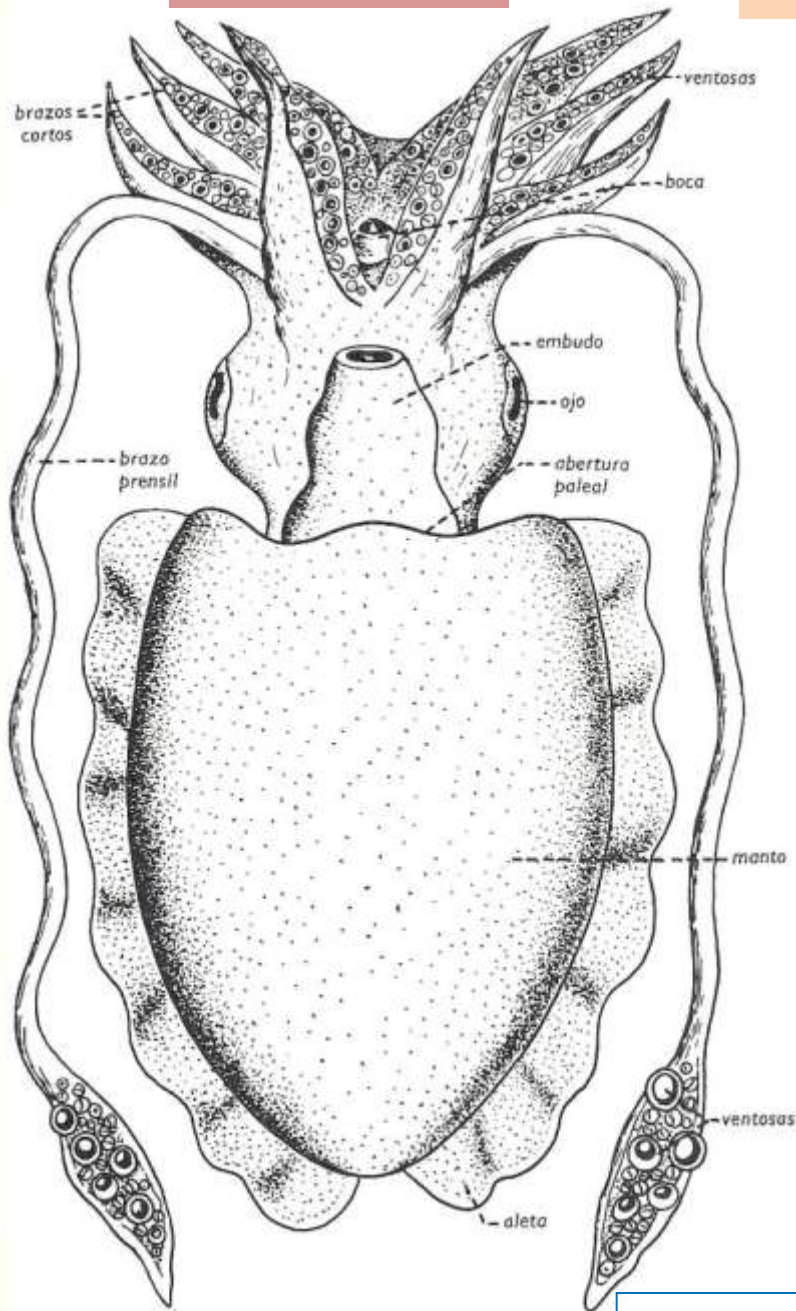


Mytilus

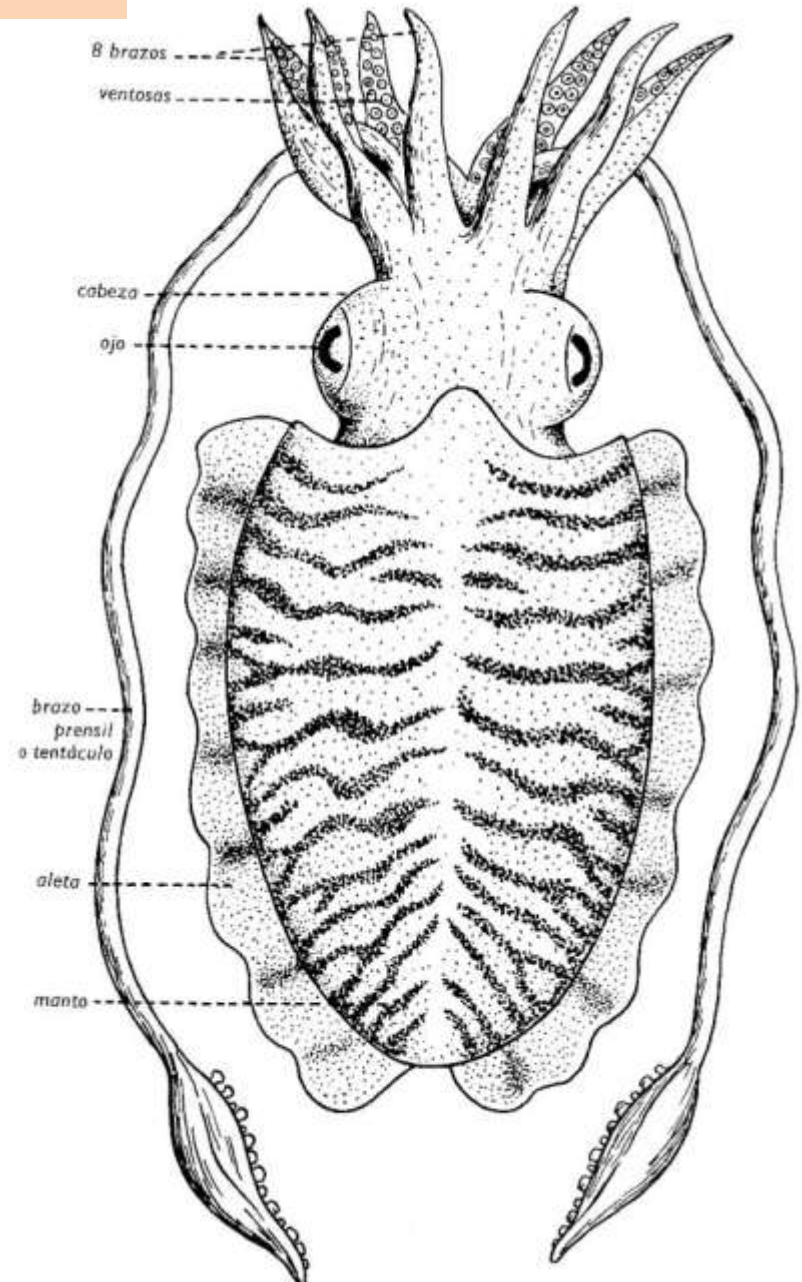




# MOLUSCOS



# CEFALÓPODOS

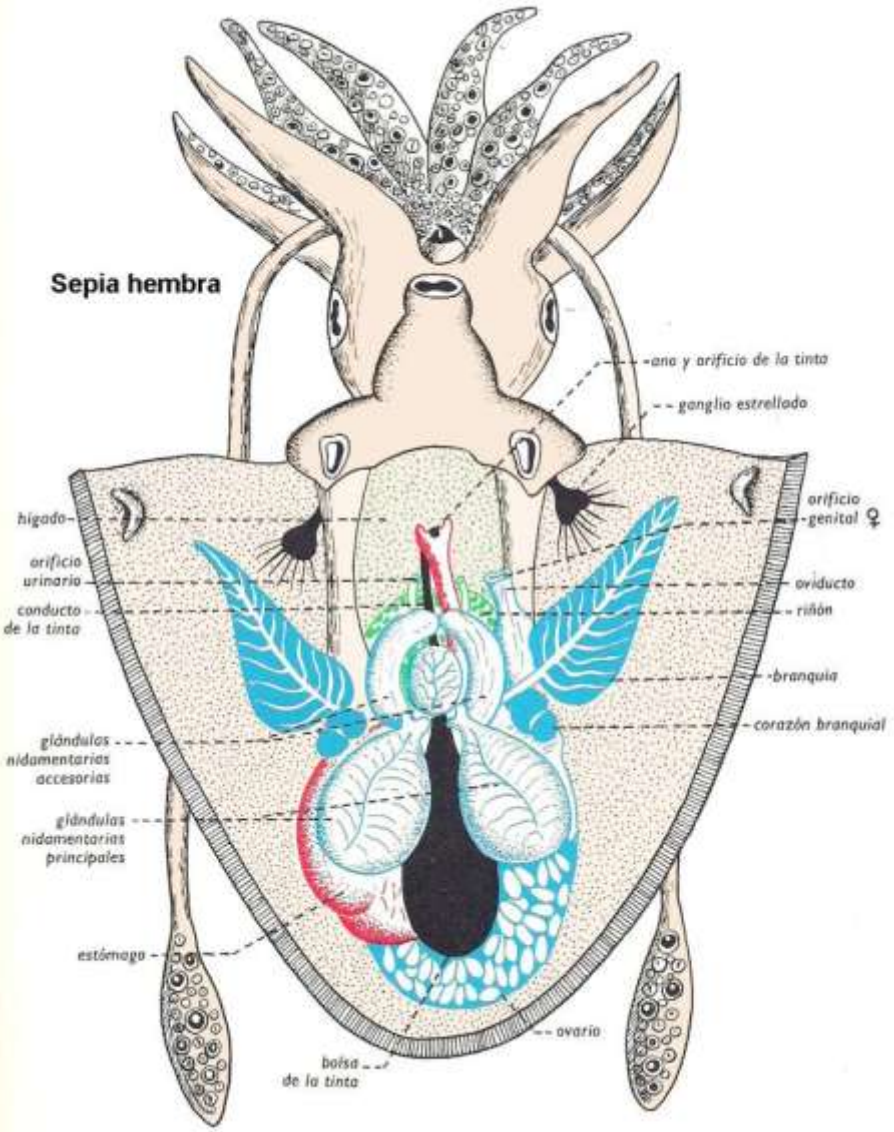




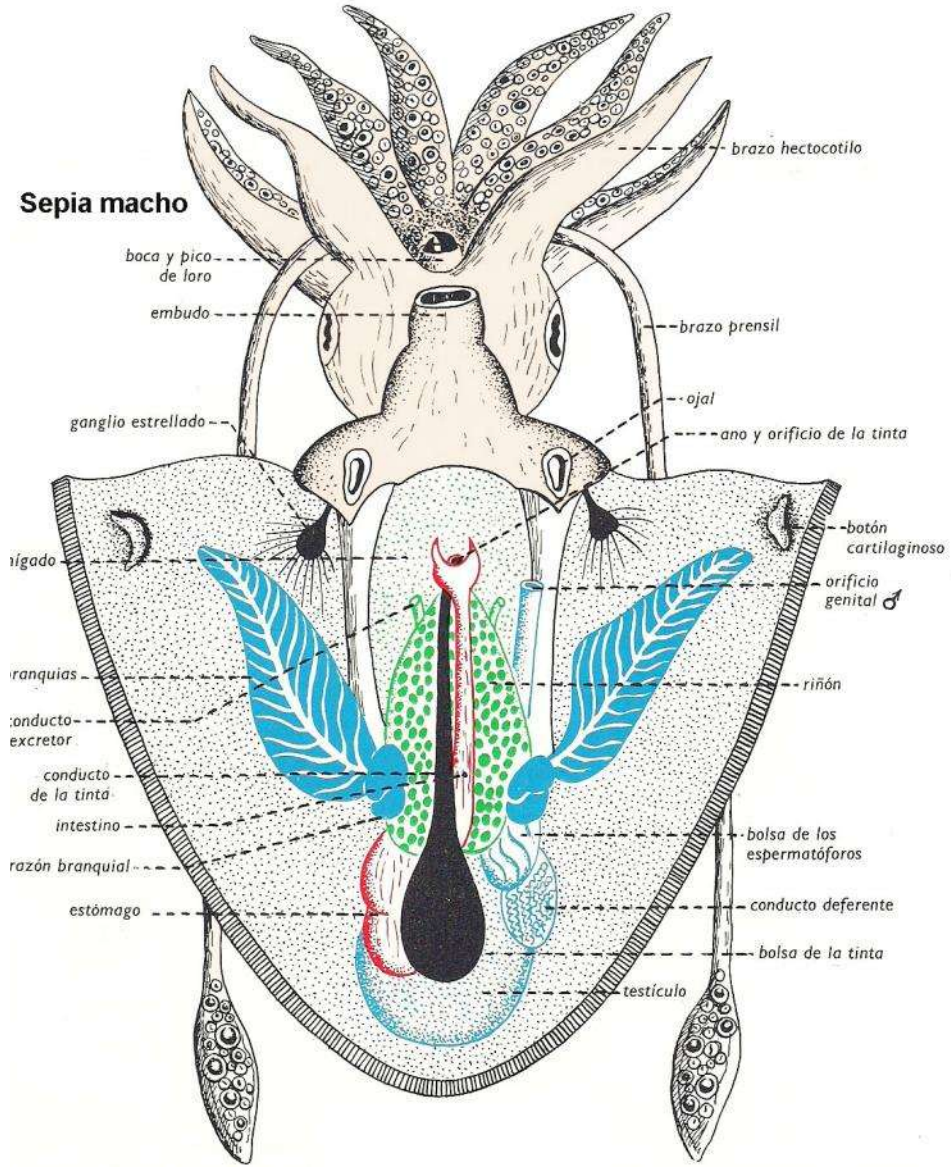
# MOLUSCOS

# CEFALÓPODOS

**Sepia hembra**



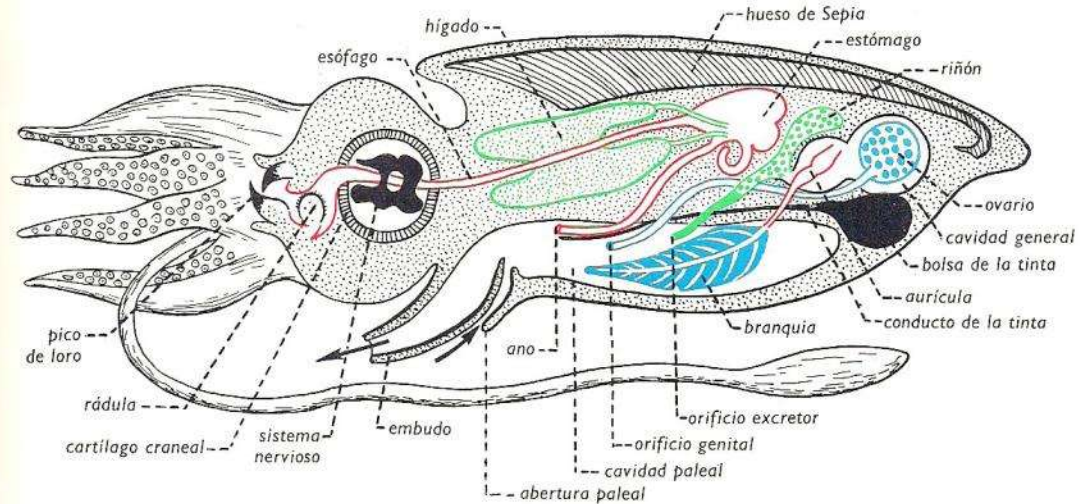
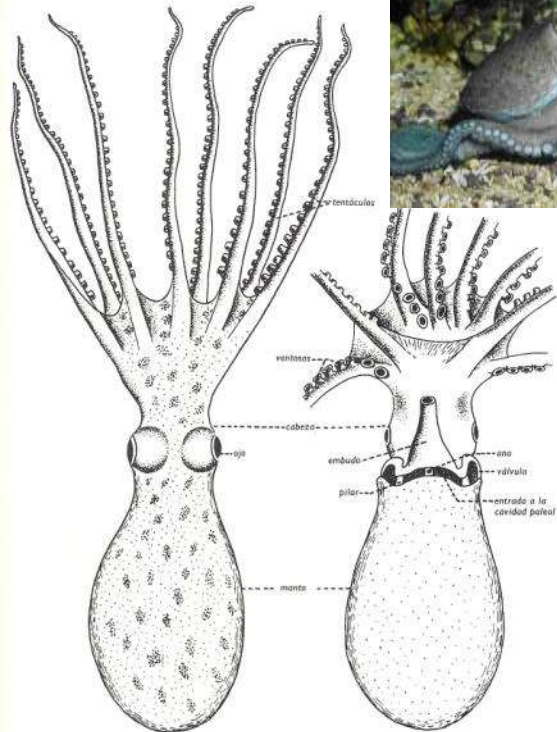
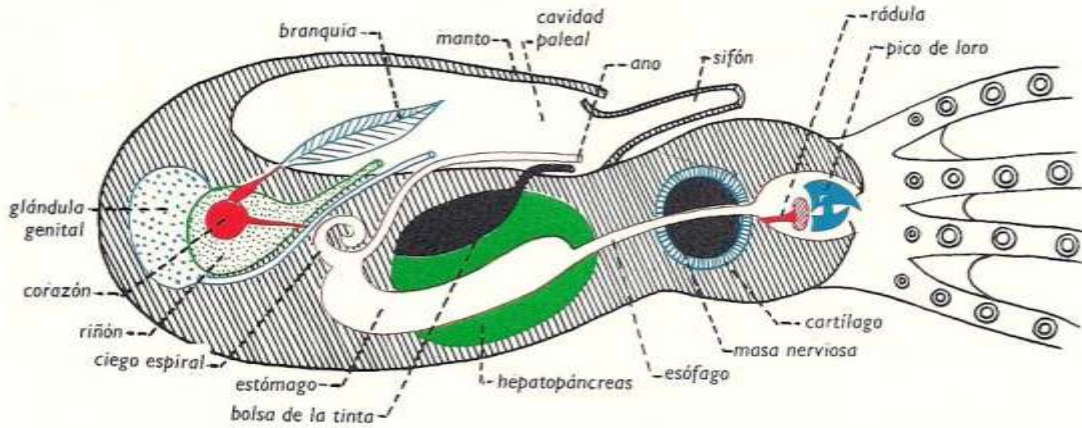
**Sepia macho**





# MOLUSCOS

# CEFALÓPODOS



## MOLUSCOS



Nautilus

## CEFALÓPODOS



Octopus



Loligo