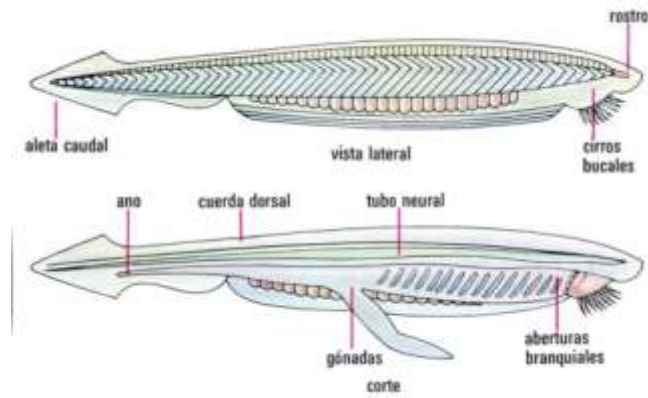


CORDADOS

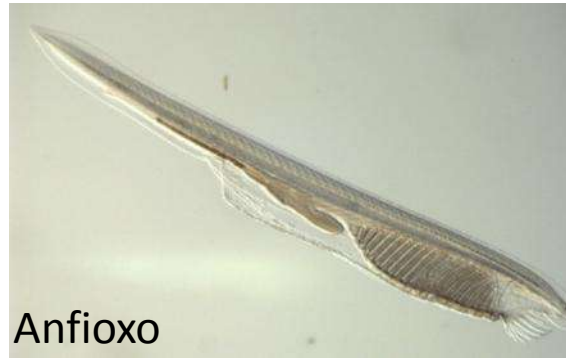


CORDADOS

- Animales triblásticos deuteróstomos, con celoma
- Simetría bilateral
- Con notocorda (en algún momento)



Cefalocordados



Protocordados
(Acráneos)

Urocordados
(Tunicados)



Salpas (Taliáceos)



Ascidias



Apendicularios (Larváceos)

Craneados

Vertebrados



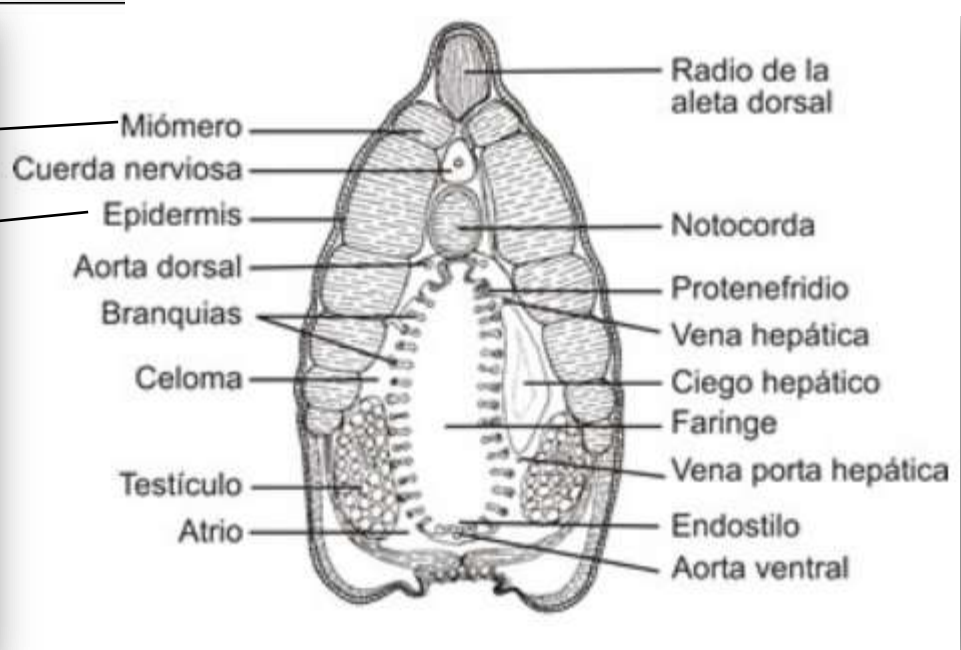
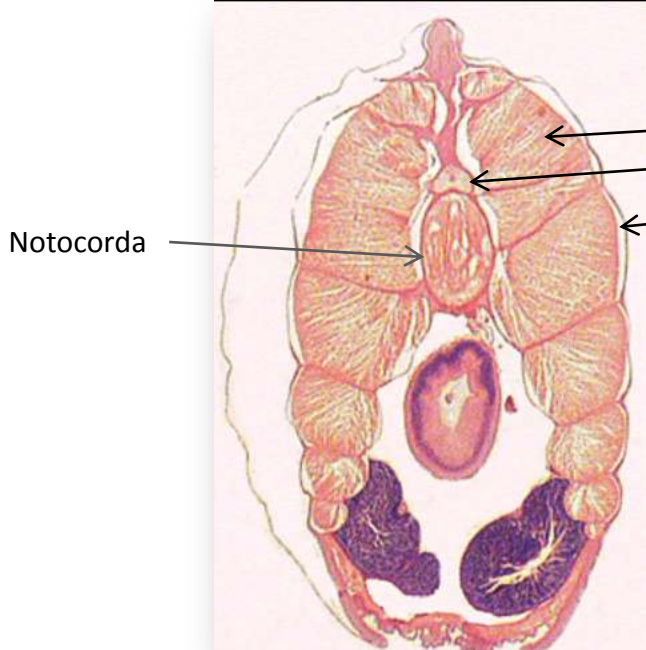
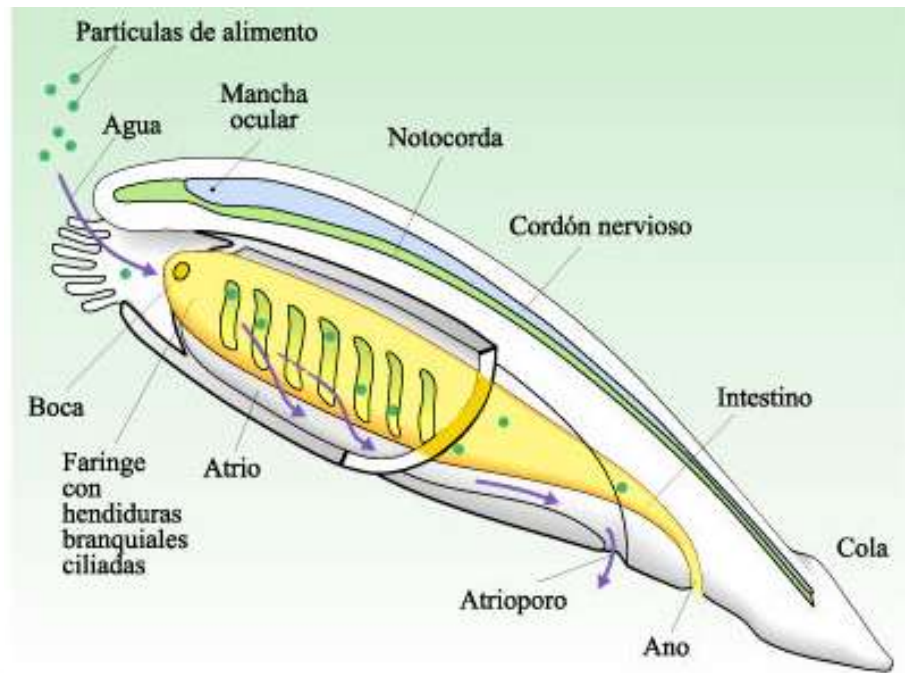
Agnatos



Gnatostomados

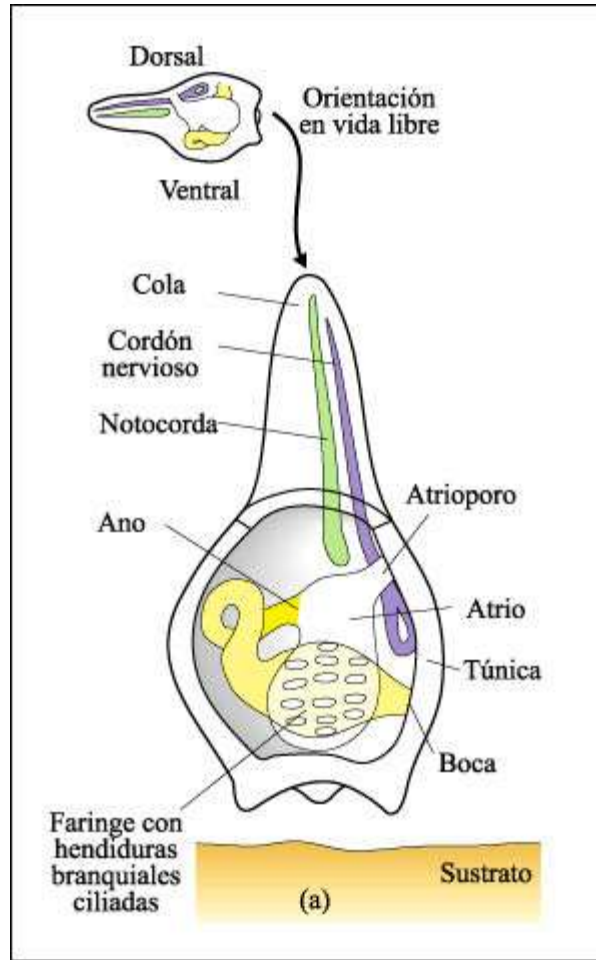
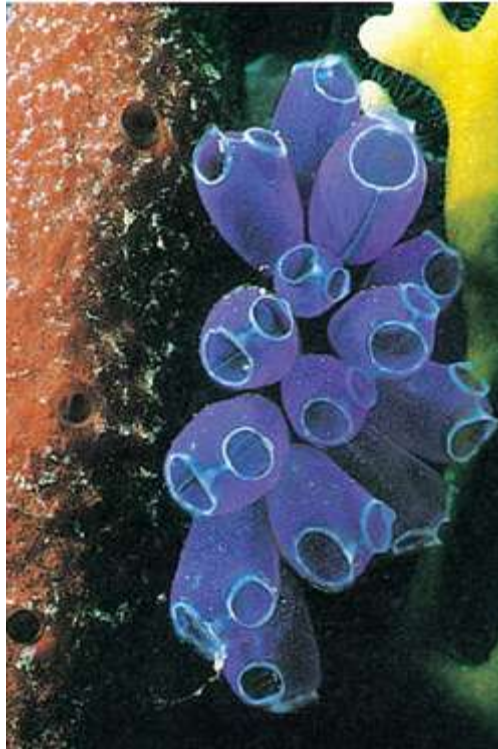
CORDADOS

Cefalocordados

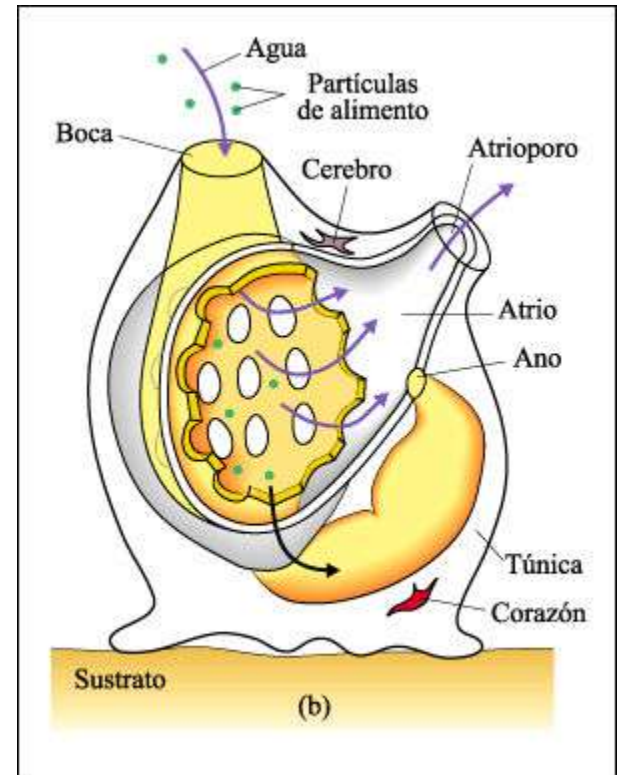


CORDADOS

Urocordados o Tunicados



Larva

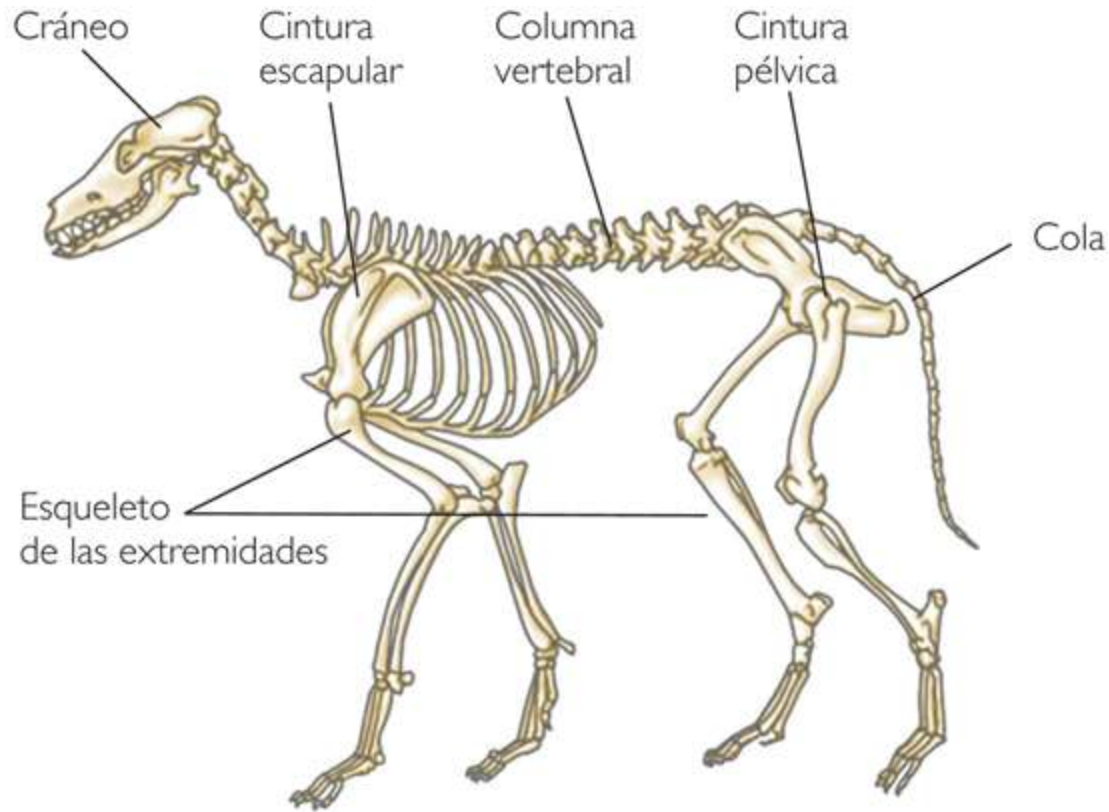


Adulto

CORDADOS

Vertebrados

Presencia de endoesqueleto
(cartilagosos u oseo)



Vertebrados

