



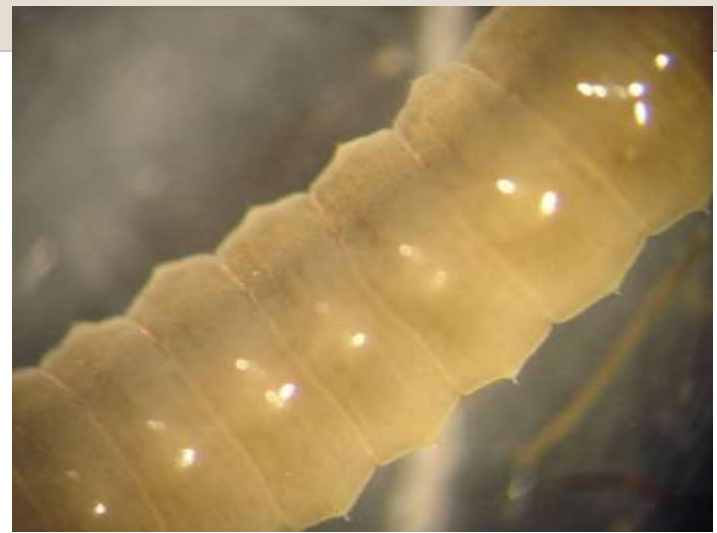
ANELIDOS

(gusanos segmentados)



ANÉLIDOS

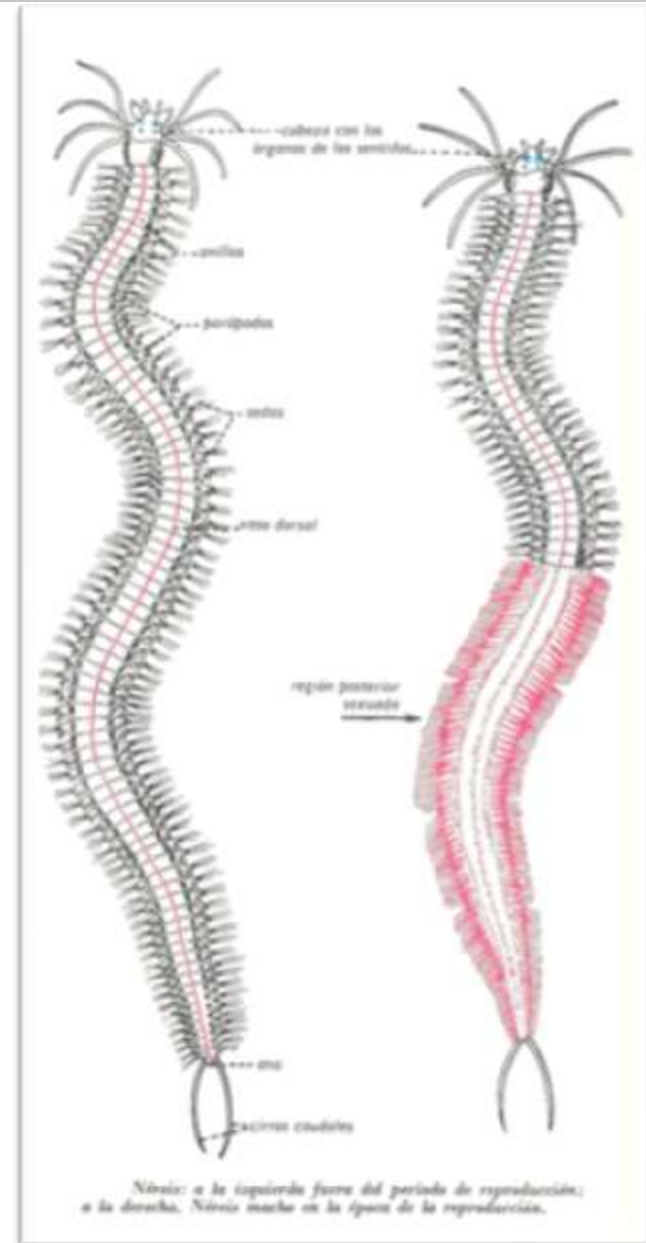
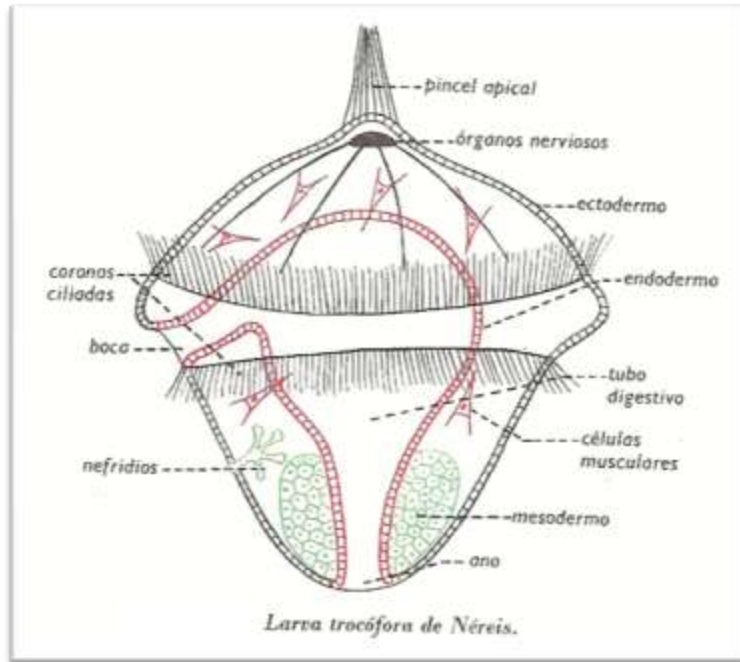
- Animales triblásticos y celomados
- Cuerpo segmentado (metámeros o segmentos)
- Simetría bilateral
- Poseen quetas o sedas (algunos las han perdido)



- POLIQUETOS: La mayoría marinos (gusanos marinos)
- OLIGOQUETOS: Terrestres o dulceacuícolas (gusanos o lombrices)
- HIRUDÍNEOS: Sin sedas (Sanguijuelas)

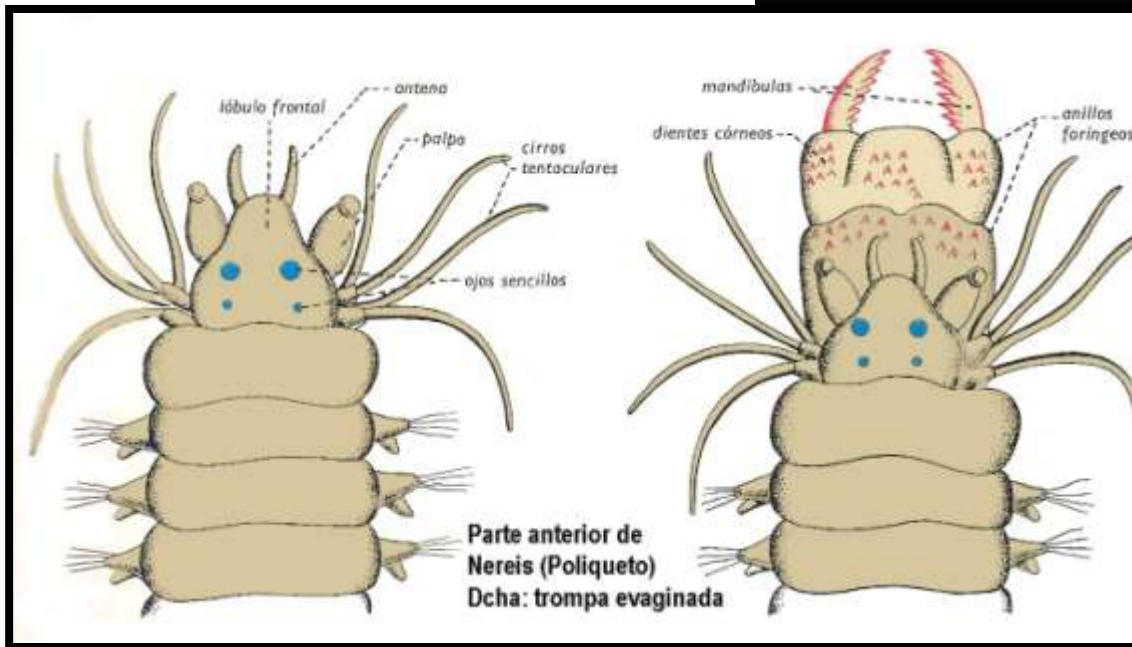
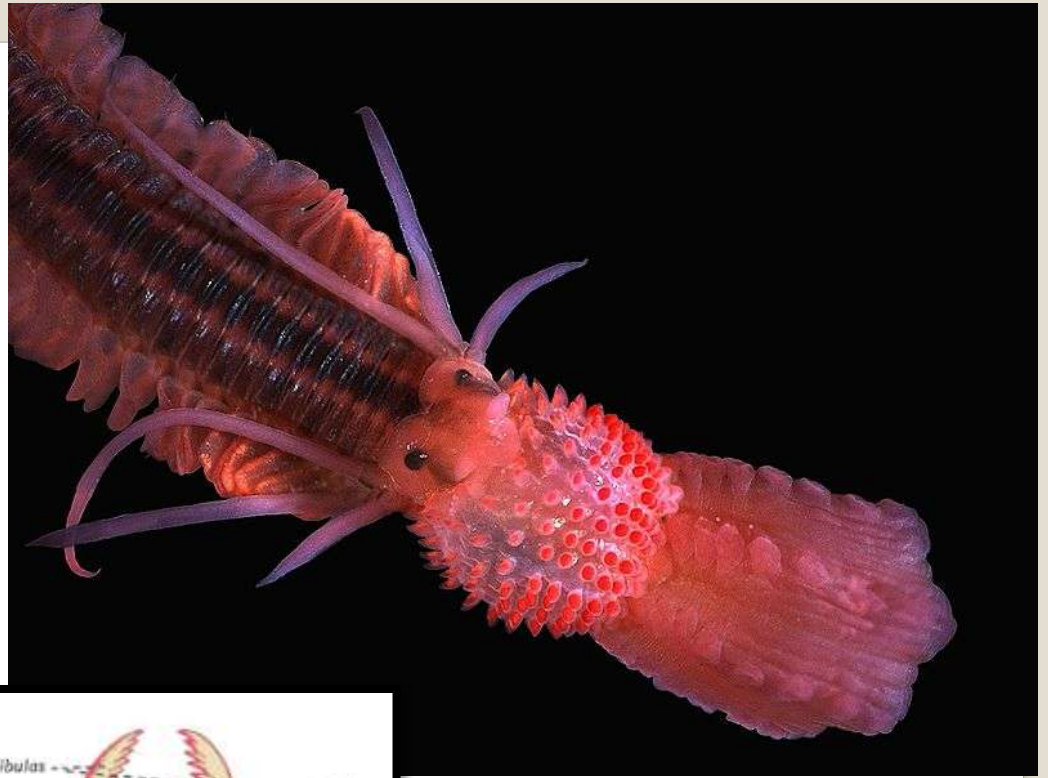
ANÉLIDOS

POLIQUETOS



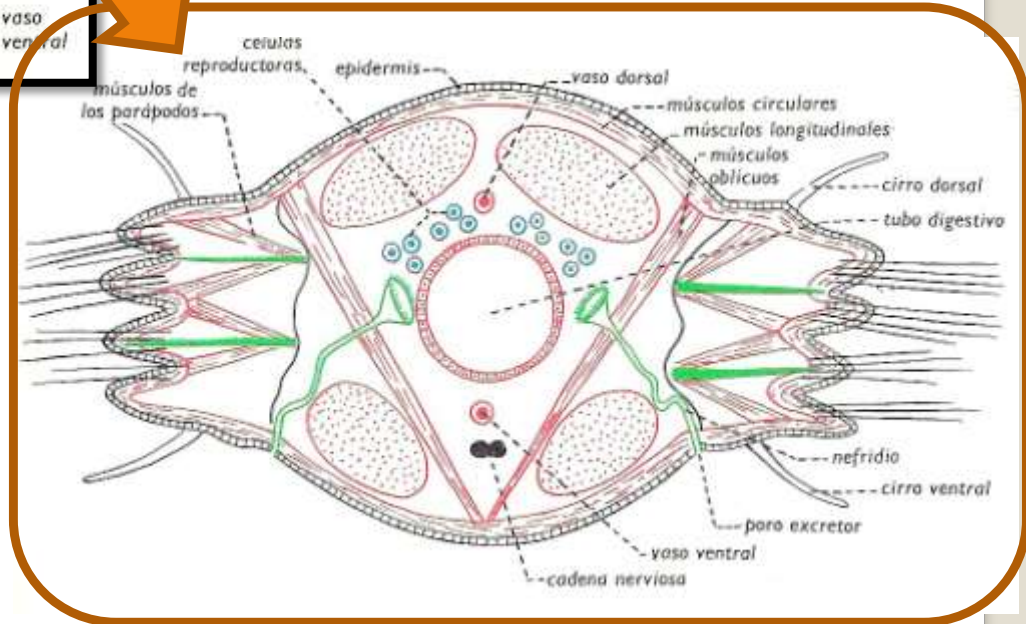
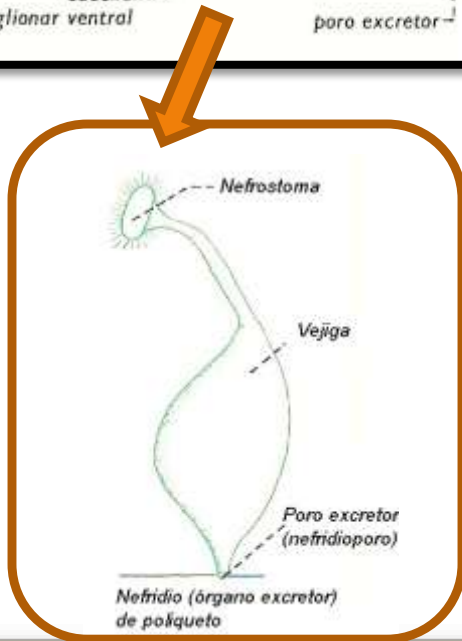
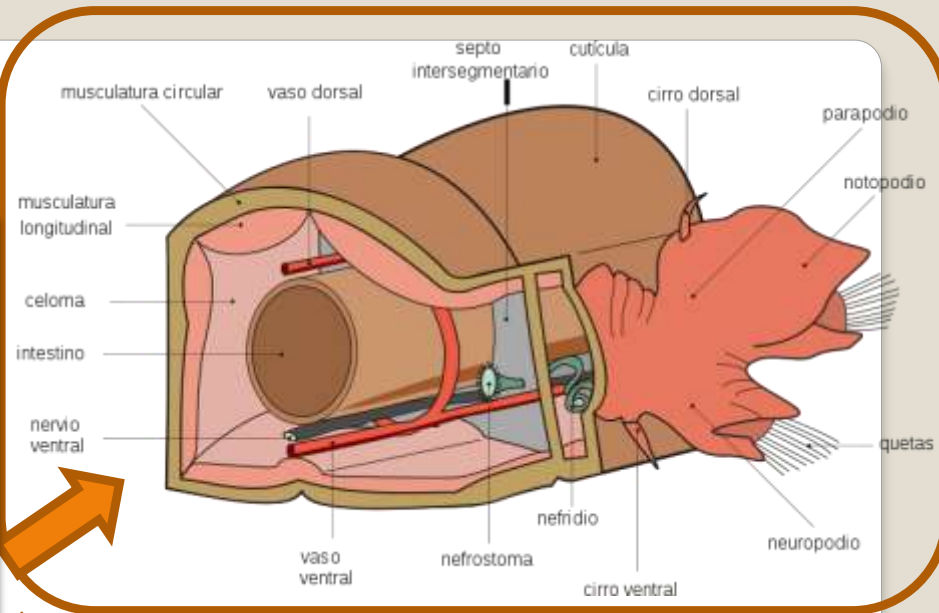
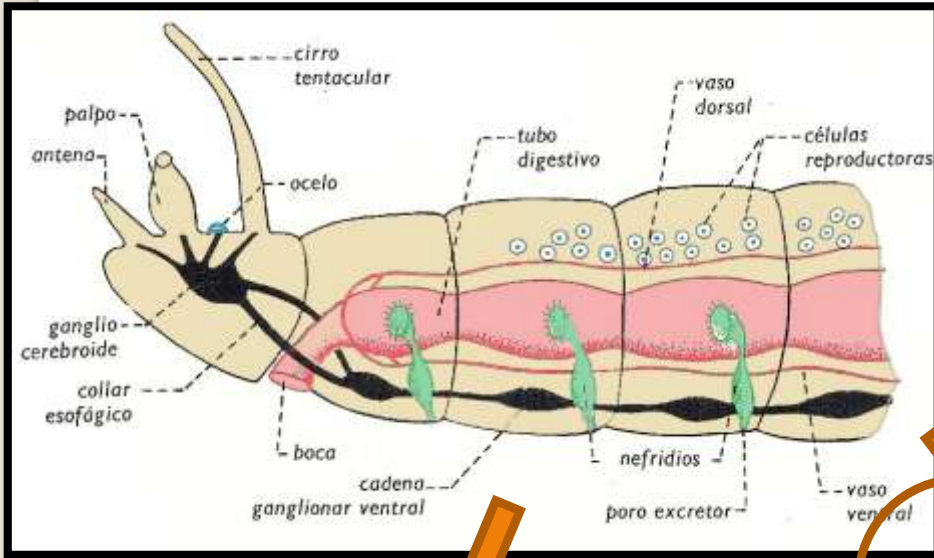
ANÉLIDOS

POLIQUETOS



ANÉLIDOS

POLIQUETOS



ANÉLIDOS

POLIQUETOS



Eunereis



Nereis



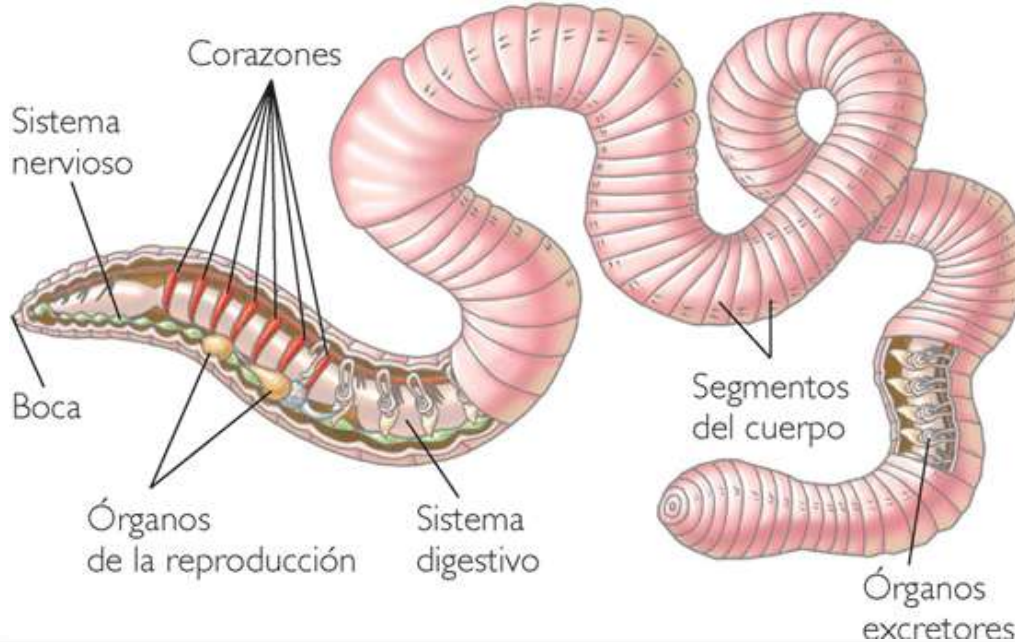
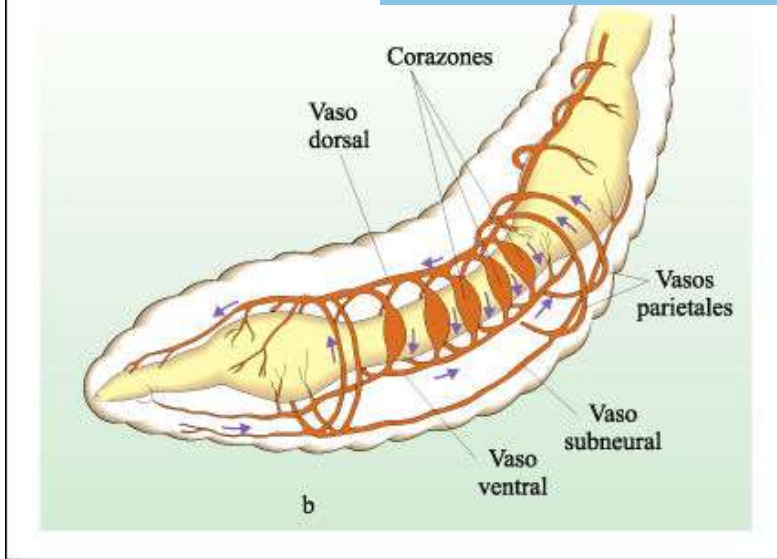
Aphrodita



Sabella

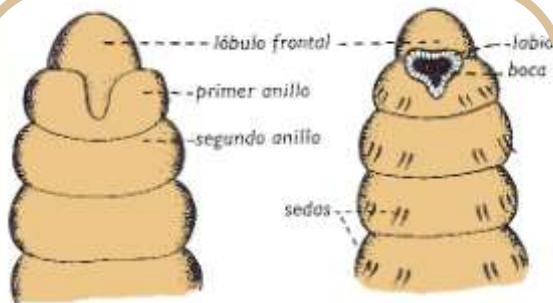
ANÉLIDOS

OLIGOQUETOS



ANÉLIDOS

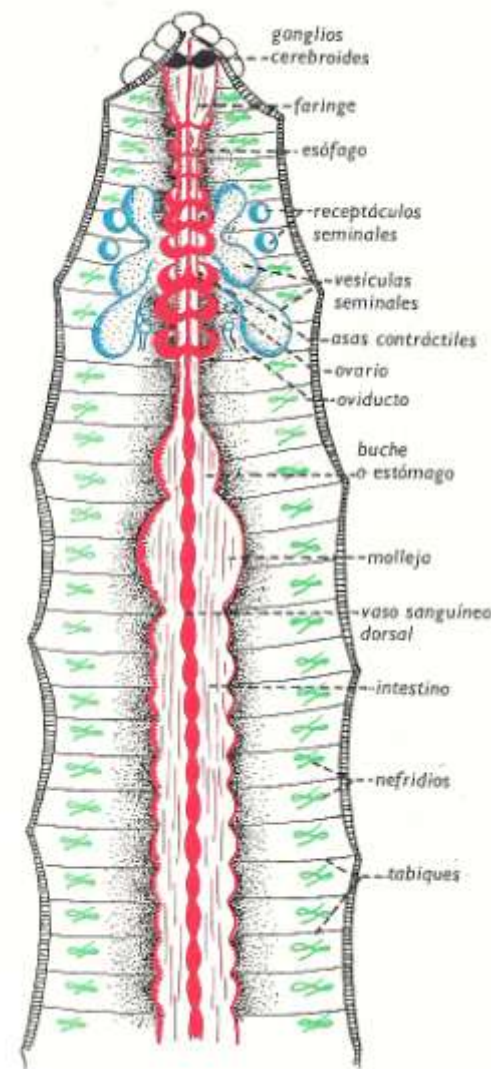
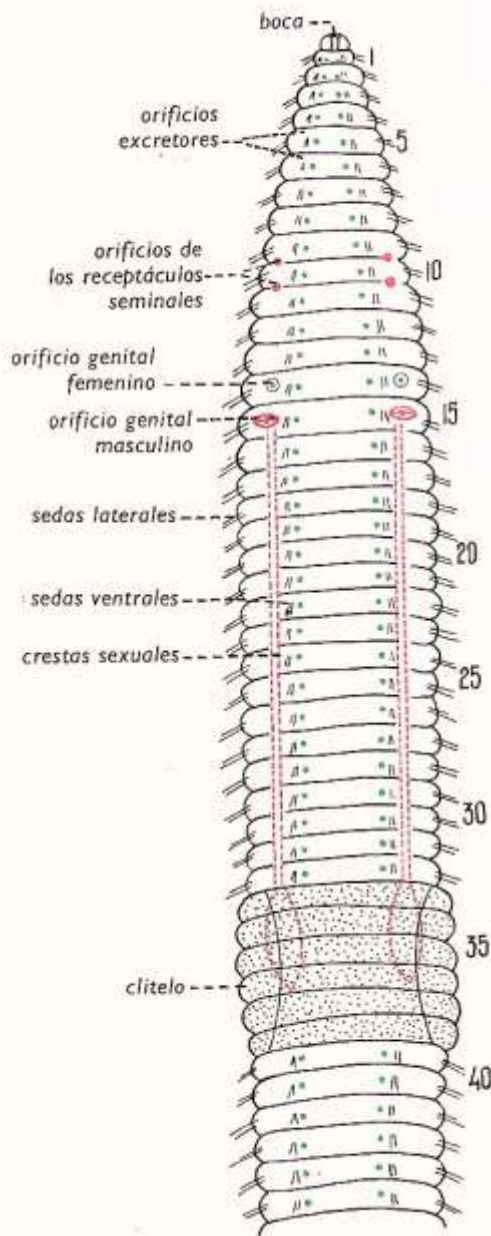
OLIGOQUETOS



Parte anterior de Oligoqueto
(lombriz de tierra)

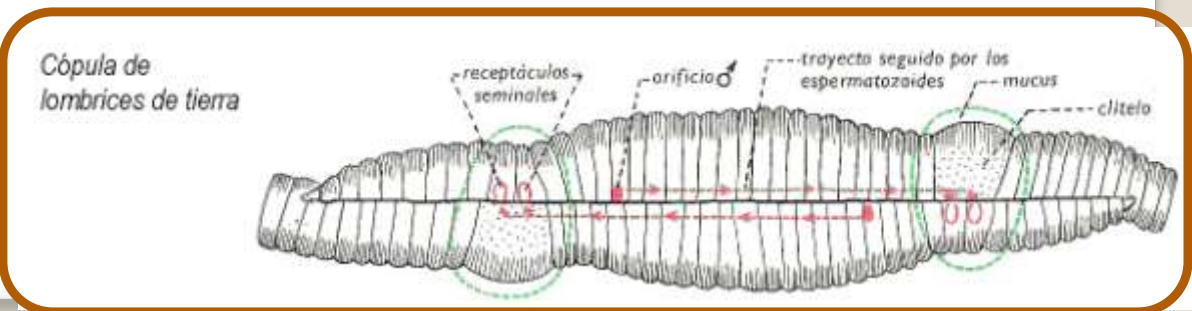
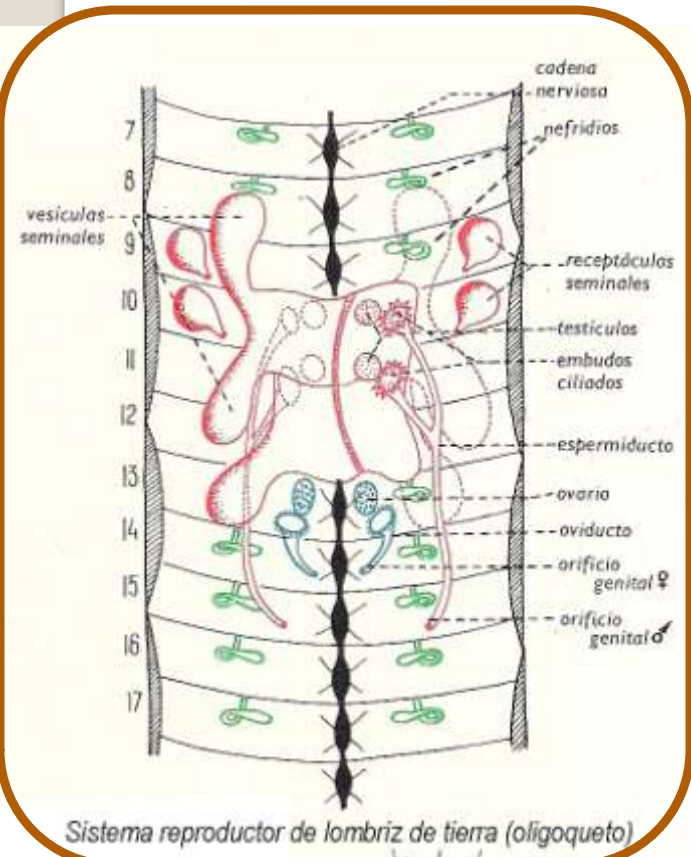
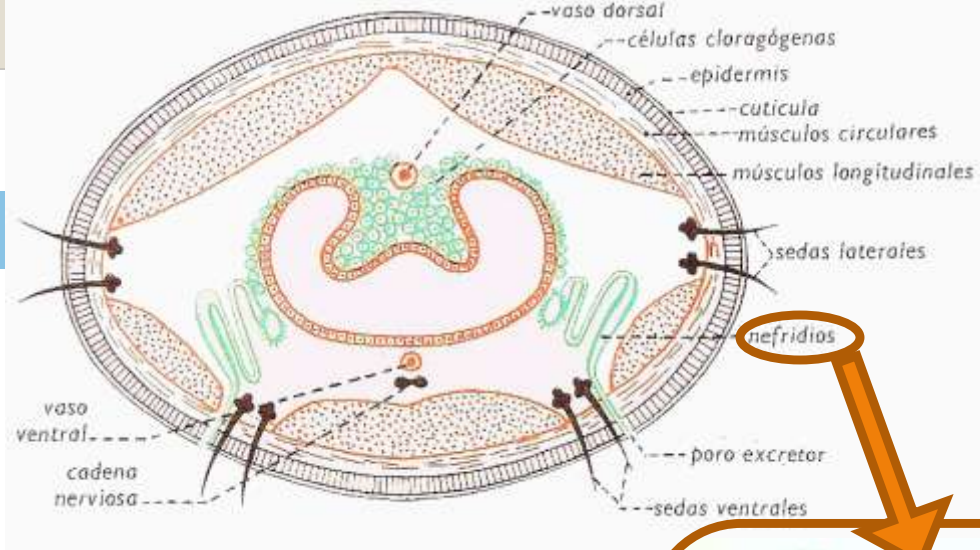


Sistema nervioso
de lombriz de tierra
(parte anterior)



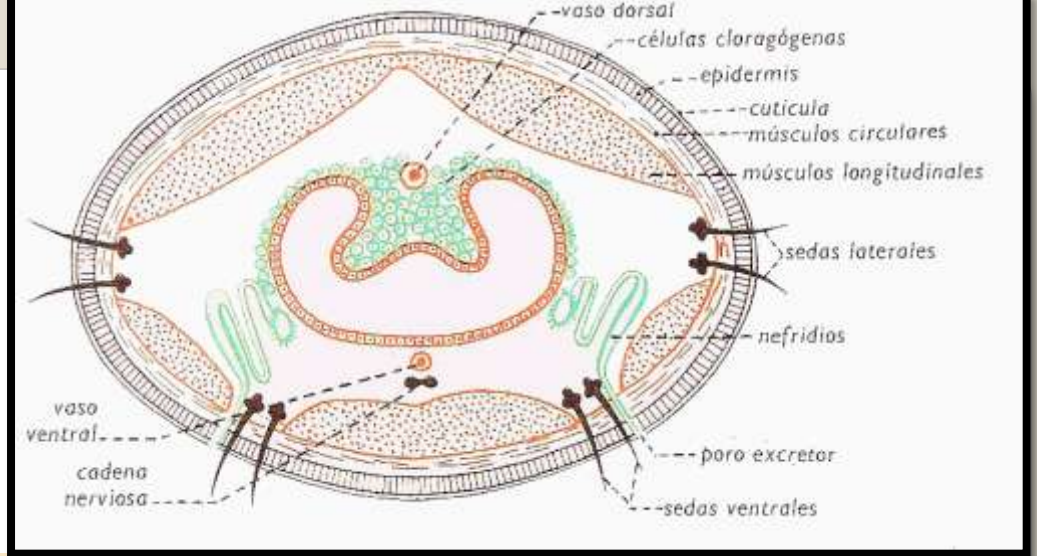
ANÉLIDOS

OLIGOQUETOS



ANÉLIDOS

OLIGOQUETOS



ANÉLIDOS

HIRUDINEOS

